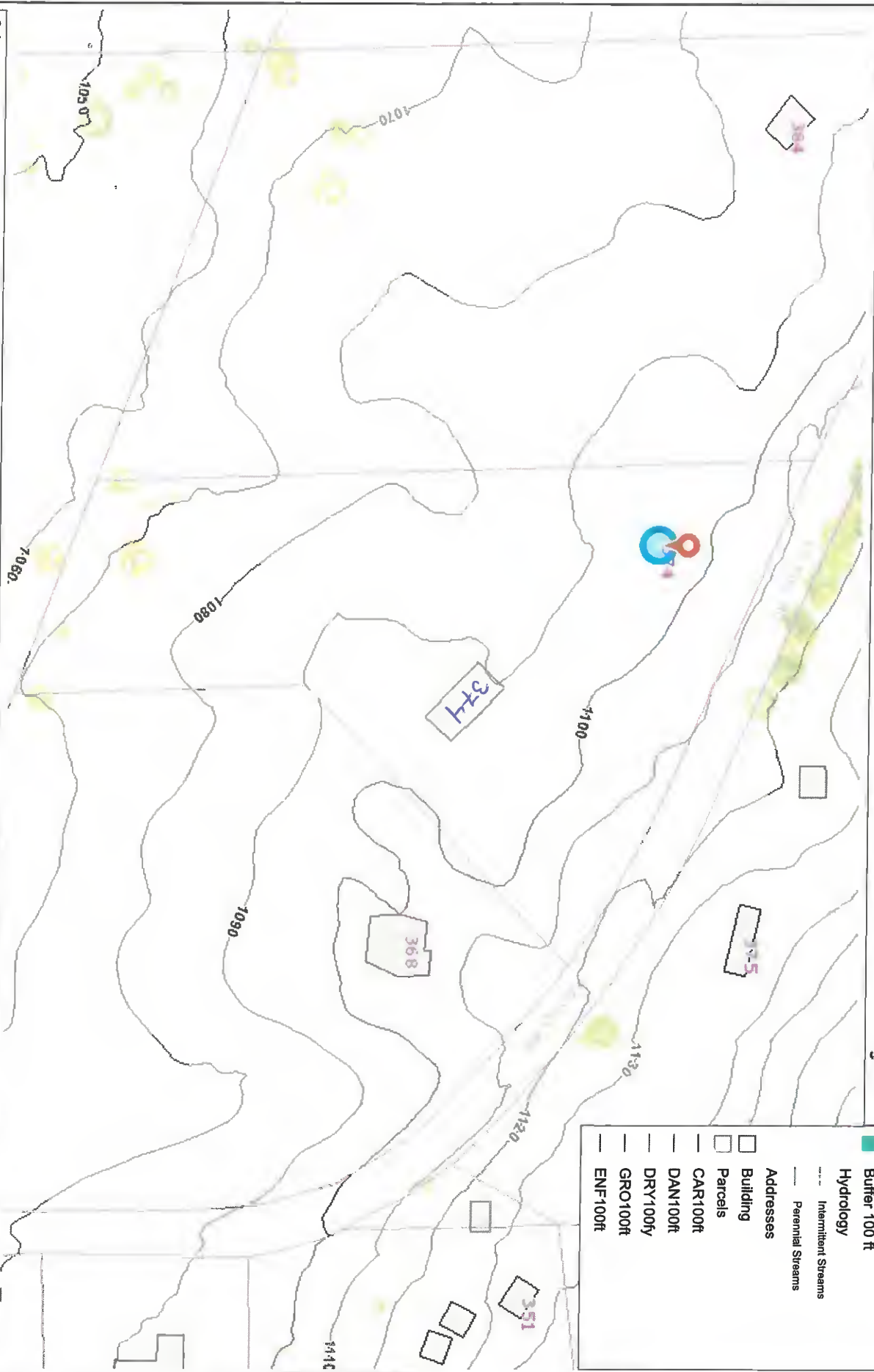


Tompkins County Environmental Health Map



Legend

- Buffer 50 ft
- Buffer 100 ft
- Hydrology**
- Intermittent Streams
- Perennial Streams
- Addresses**
- Building
- Parcels
- CAR100ft
- DAN100ft
- DRY100ft
- GRO100ft
- ENF100ft



0.1 Miles / 0.1 Kilometers

1:2,257

Disclaimer: Data contained on this map was provided or derived from data developed or compiled by the Tompkins County ITS - GIS Division, and is the best available to date. The originators do not accept any responsibility for any errors, omissions, or positional accuracy.

© 2015 Tompkins County GIS Map Projection: WGS_1984_Web_Mercator_Auxiliary_Sphere