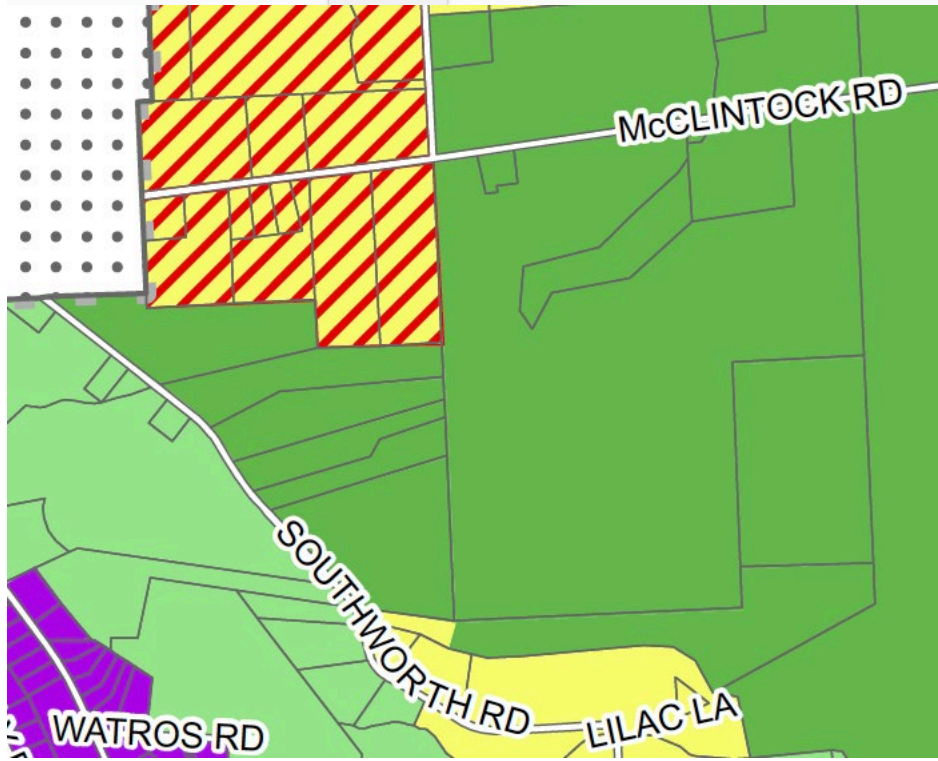
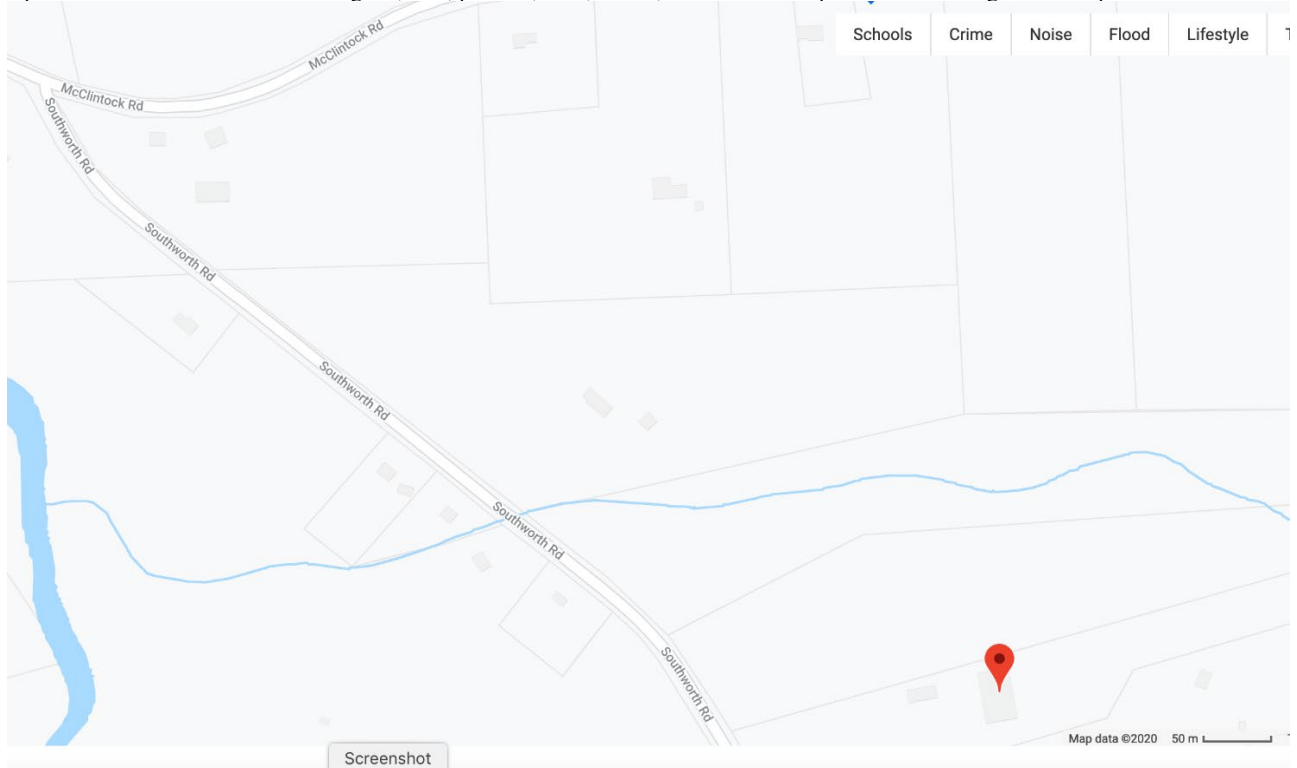
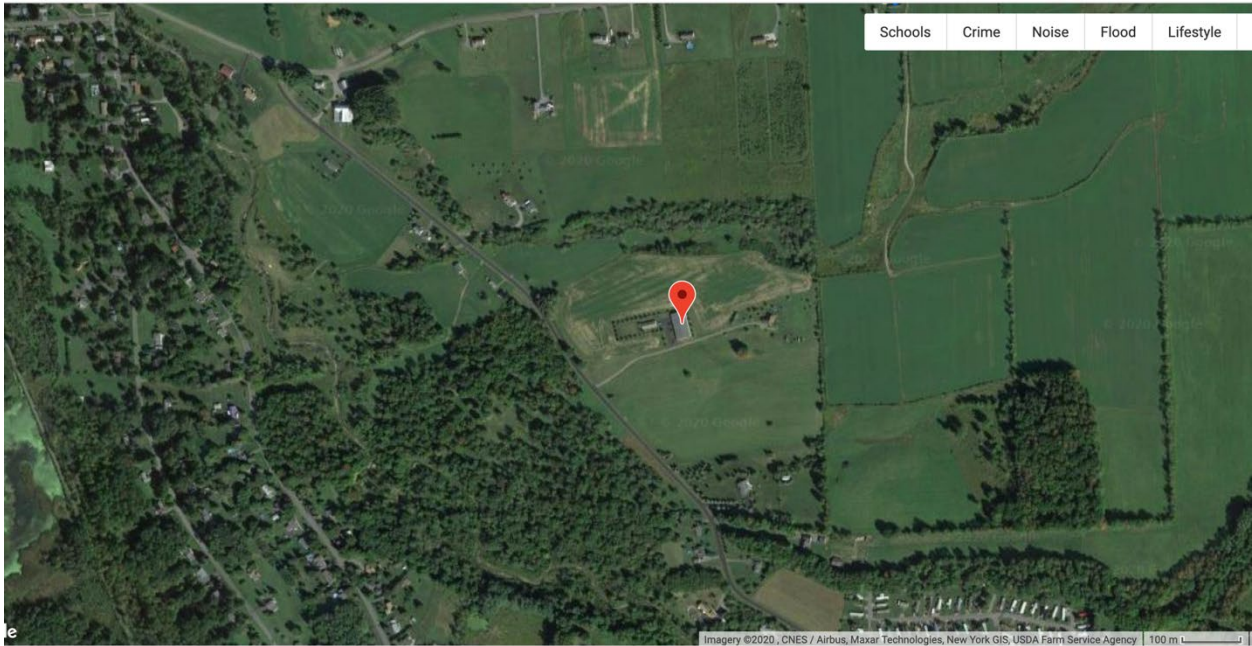
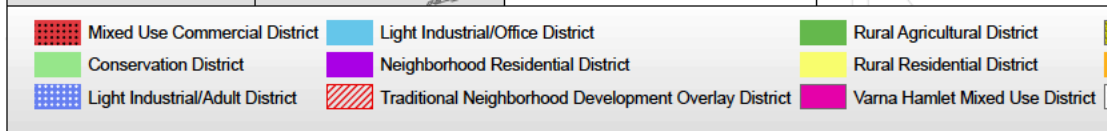


Considering 97 Southworth Rd request to be an ag-related business:

Agriculture-Related Enterprise – A retail or wholesale enterprise providing services or products utilized in agricultural production, such as Structures, agricultural equipment and agricultural equipment parts, livestock, feed, seed, fertilizer and agricultural equipment repairs and wholesale or retail sale of grain, fruit, produce, trees, shrubs, flowers or other products of local agricultural operations.



Dryden zoning map portion.



USES	NR Neighborhood Residential	RR Rural Residential	RA Rural Agricultural	CV Conservation	MC Mixed Use Commercial	LIO, LIO-A Light Industrial/ Office
Agriculture-Related Enterprise	X	SUP	P	P	P	SUP
Industry, Light	X	X	X	X	P	P
Industry/ Manufacturing (see §1303)	X	X	X	X	SUP	SUP
Retail business	X	X	SUP	X	P	P
Service business	X	SUP	SUP	X	P	P

Here are the only places in Dryden zoned for light industrial (blue and blue hatched)

:

