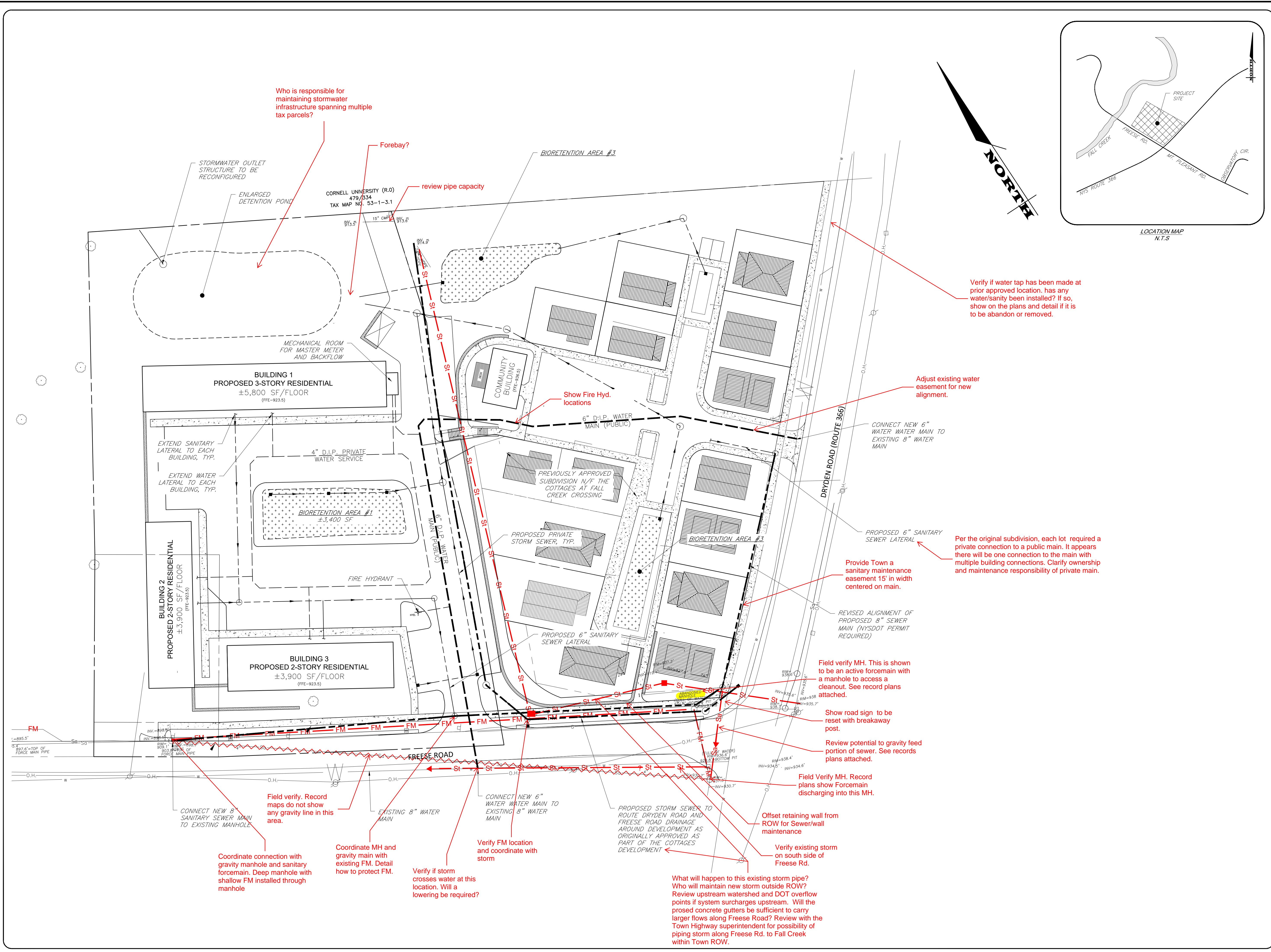


File: I:\Engineering\Job Files\1096-20\Drawings\1096-20 Plans.dwg, Last saved: 3/12/2020, Plot Date: 3/12/2020, Plot Style: MARATHON STANDARD HALF.CTB



Who is responsible for maintaining stormwater infrastructure spanning multiple tax parcels?

Forebay?

review pipe capacity

Show Fire Hyd. locations

Verify if water tap has been made at prior approved location. Has any water/sanitary been installed? If so, show on the plans and detail if it is to be abandon or removed.

Adjust existing water easement for new alignment.

Per the original subdivision, each lot required a private connection to a public main. It appears there will be one connection to the main with multiple building connections. Clarify ownership and maintenance responsibility of private main.

Field verify MH. This is shown to be an active forcemain with a manhole to access a cleanout. See record plans attached.

Show road sign to be reset with breakaway post.

Review potential to gravity feed portion of sewer. See records plans attached.

Field Verify MH. Record plans show Forceman discharging into this MH.

Offset retaining wall from ROW for Sewer/wall maintenance

Verify existing storm on south side of Freese Rd.

What will happen to this existing storm pipe? Who will maintain new storm outside ROW? Review upstream watershed and DOT overflow points if system surcharges upstream. Will the proposed concrete gutters be sufficient to carry larger flows along Freese Road? Review with the Town Highway superintendent for possibility of piping storm along Freese Rd. to Fall Creek within Town ROW.

Coordinate connection with gravity manhole and sanitary forcemain. Deep manhole with shallow FM installed through manhole

Coordinate MH and gravity main with existing FM. Detail how to protect FM.

Verify if storm crosses water at this location. Will a lowering be required?

Verify FM location and coordinate with storm

CONNECT NEW 6" WATER MAIN TO EXISTING 8" WATER MAIN

CONNECT NEW 8" SANITARY SEWER MAIN TO EXISTING MANHOLE

CONNECT NEW 6" WATER MAIN TO EXISTING 8" WATER MAIN

PROPOSED 6" SANITARY SEWER LATERAL

REVISED ALIGNMENT OF PROPOSED 8" SEWER MAIN (NYS DOT PERMIT REQUIRED)

6" D.I.P. WATER MAIN (PUBLIC)

4" D.I.P. PRIVATE WATER SERVICE

BIORETENTION AREA #1 ±3,400 SF

PROPOSED 3-STORY RESIDENTIAL ±5,800 SF/FLOOR (FFE-923.5)

PROPOSED 2-STORY RESIDENTIAL ±3,900 SF/FLOOR (FFE-923.5)

PROPOSED 2-STORY RESIDENTIAL ±3,900 SF/FLOOR (FFE-923.5)

COMMUNITY BUILDING (FFE-923.5)

PROPOSED PRIVATE STORM SEWER, TYP.

PROPOSED 6" SANITARY SEWER LATERAL

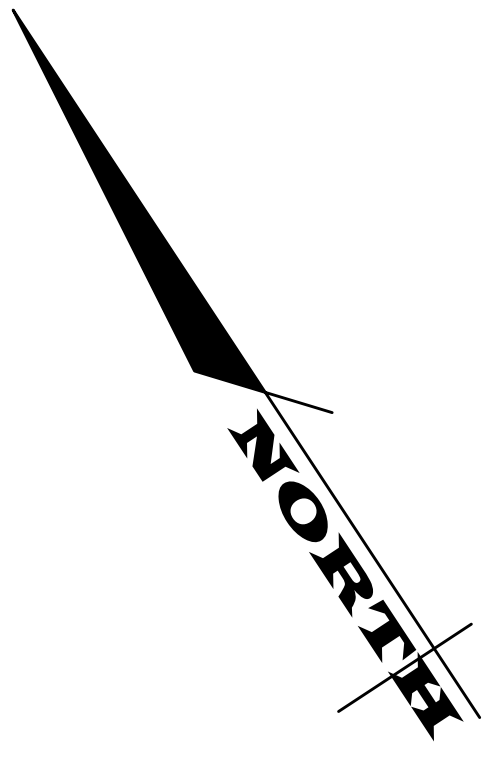
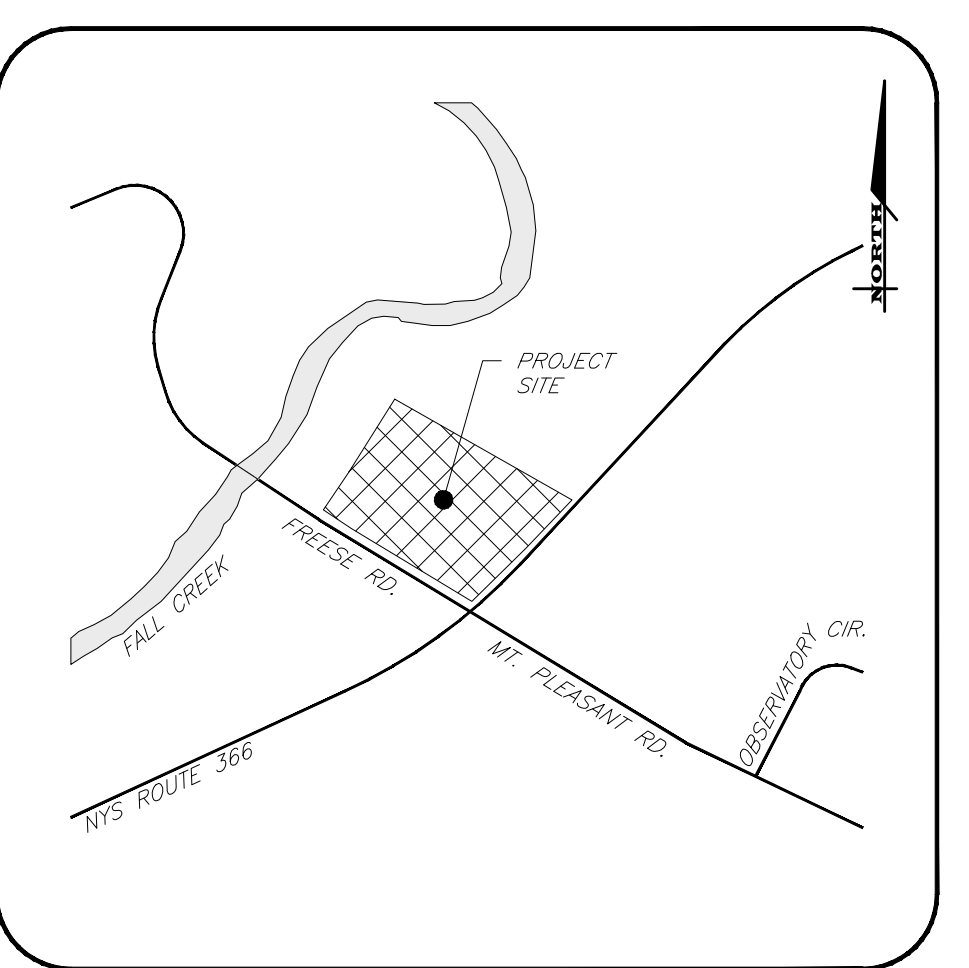
PROPOSED STORM SEWER TO ROUTE DRYDEN ROAD AND FREESE ROAD DRAINAGE AROUND DEVELOPMENT AS ORIGINALLY APPROVED AS PART OF THE COTTAGES DEVELOPMENT

STORMWATER OUTLET STRUCTURE TO BE RECONFIGURED

ENLARGED DETENTION POND

CORNELL UNIVERSITY (R.O) 479/534 TAX MAP NO. 53-1-3.1

BIORETENTION AREA #3



**MARATHON ENGINEERING**  
 ROCHESTER LOCATION  
 39 CASCADE DRIVE  
 ROCHESTER, NY 14614  
 585-458-7770  
 ITHACA LOCATION  
 840 HANSHAW RD, STE 12  
 ITHACA, NY 14850  
 607-241-2917  
 www.marathoneng.com

**SITE DEVELOPMENT PLANS**  
 for  
**MAIFLY DEVELOPMENT**  
 INTERSECTION OF FREESE ROAD AND DRYDEN ROAD (STATE ROUTE 366)  
 TOWN OF DRYDEN  
 TOMPKINS COUNTY  
 STATE OF NEW YORK

JOB NO: 1096-20  
 SCALE: 1"=30'  
 DRAWN: AMF  
 DESIGNED: AMF  
 DATE: 3/11/20

**REVISIONS**

DATE	BY	REVISION

© 2020 MARATHON ENG.

COPYRIGHT © 2020 MARATHON ENG.

ADAM M. FISHEL

DRAWING TITLE:  
**Sketch Utility Plan**

3 of 3  
 SHEET No: **C-4.0**

1096-20  
 JOB No: DRAWING No: