

REVISIONS				
REV	DESCRIPTION	DATE	CHK/DE	APV
A	ISSUED FOR INFORMATION	08/13/19	N.R./M.R.	M.S.
B	ISSUED FOR INFORMATION	09/13/19	N.R./M.R.	M.S.
C	ISSUED FOR APPROVAL	11/07/19	N.R./M.R.	M.S.

REFERENCE DRAWINGS

NOTES

- 1. CO2, EMISSION PORTS IN VERTICAL 31'-0" STACK



PRELIMINARY ONLY  
- NOT FOR CONST. -

APPROVED		DATE	
PROJ ENG	M. SACHNIK	DATE	
DISCIPLINE ENG	M. ROUTHU	DATE	
CHECK		DATE	
DESIGN/DRAFT	D. VIDALURRI	DATE	08/07/19
SOLAR PROJECT/PROPOSAL NO.		4C161/P115-0034	
CUSTOMER IDENT. NO.			
CUSTOMER		DOMINION ENERGY	
SOLAR TURBINES		THIS COPYRIGHTED WORK AND THE INFORMATION HEREIN IS PROPRIETARY TO CATERPILLAR INC., SOLAR TURBINES INC., AND/OR SUBSIDIARIES OF EITHER, WITHOUT EXPRESS WRITTEN PERMISSION FROM CATERPILLAR INC. OR SOLAR TURBINES INC., ANY COPYING, DISCLOSURE, OR USE EXCEPT THAT FOR WHICH IT IS LOANED, IS PROHIBITED.	
LCMB		PLANT LAYOUT	
(2) CENTAUR 50		DETI BORGER STATION	
<b>Solar Turbines</b>		A Caterpillar Company	
DRAWING NO.	4C161-000-1500-LAYT-010	SCALE	1/16"=1'-0"
REV.	C	SHEET	

Plot date: Monday, January 6, 2020 11:28:23 AM

8

7

6

5

4

3

2

1

REVISIONS				
REV	DESCRIPTION	DATE	CHK/DE	APV
A	ISSUED FOR INFORMATION	08/13/19	N.R./M.R.	M.S.
B	ISSUED FOR INFORMATION	09/13/19	N.R./M.R.	M.S.
C	ISSUED FOR APPROVAL	11/07/19	N.R./M.R.	M.S.

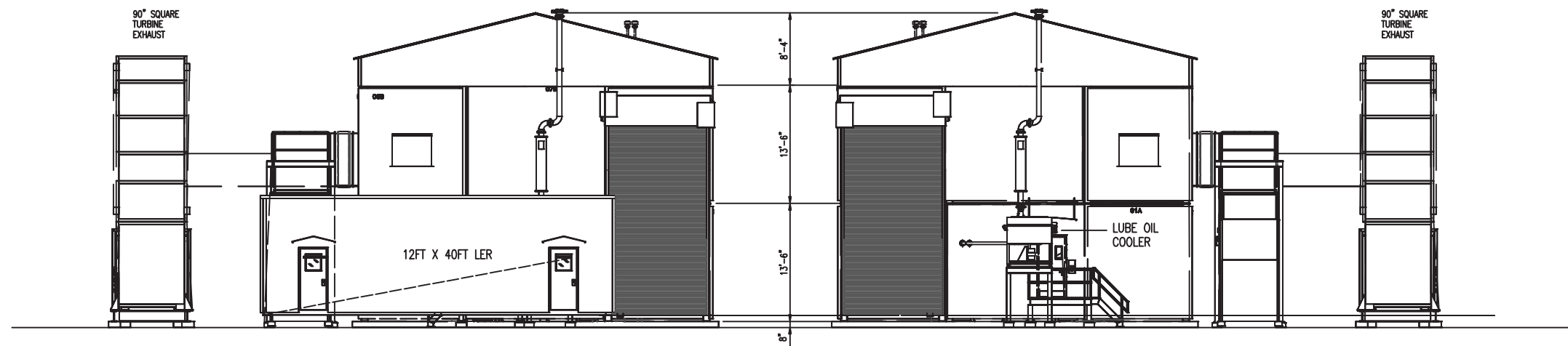
REFERENCE DRAWINGS

NOTES

- 1. CO2, EMISSION PORTS IN VERTICAL 31'-0" STACK



PRELIMINARY ONLY  
- NOT FOR CONST.-



ELEVATION LOOKING SOUTH

Plot date: Monday, January 6, 2020 11:28:30 AM

8

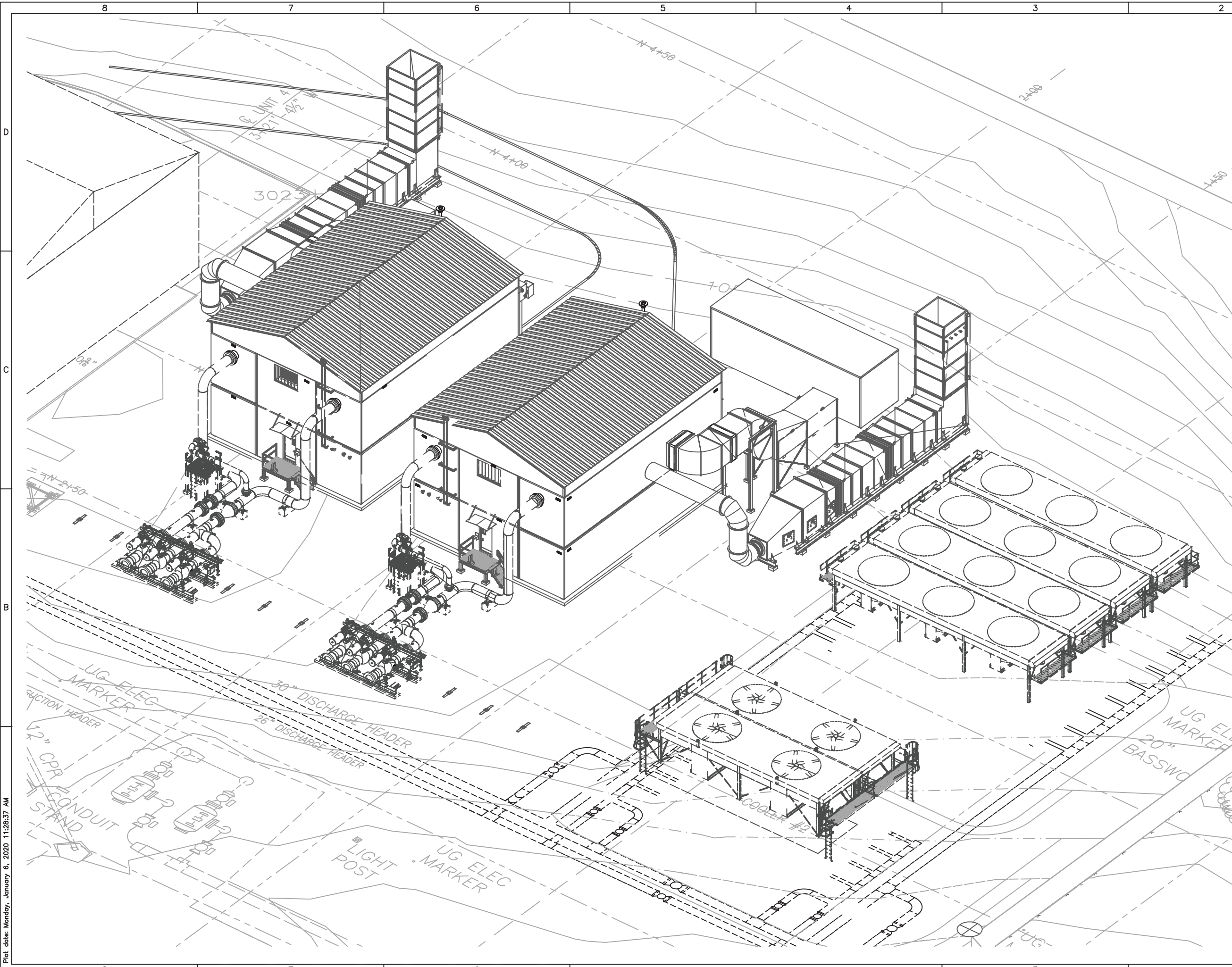
7

6

LAST MODIFICATION BY: D37314

3

SOLAR TURBINES		THIS COPYRIGHTED WORK AND THE INFORMATION HEREIN IS PROPRIETARY TO CATERPILLAR INC., SOLAR TURBINES INC., AND/OR SUBSIDIARIES OF EITHER, WITHOUT EXPRESS WRITTEN PERMISSION FROM CATERPILLAR INC. OR SOLAR TURBINES INC., ANY COPYING, DISCLOSURE, OR USE EXCEPT THAT FOR WHICH IT IS LOANED, IS PROHIBITED.	
APPROVED		LCMB	
PROJ ENG M. SACHNIK	DATE	PLANT LAYOUT - ELEVATION	
DISCIPLINE ENG M. ROUTHU	DATE	(2) CENTAUR 50	
CHECK	DATE	DETI BORGER STATION	
DESIGN/DRAFT D. VIDALURRI	DATE 08/07/19	<b>Solar Turbines</b>	
SOLAR PROJECT/PROPOSAL NO. 4C161/P115-0034		A Caterpillar Company	
CUSTOMER IDENT. NO.		DRAWING NO. 4C161-000-1500-LAYT-110	SCALE 1/8"=1'-0"
CUSTOMER DOMINION ENERGY		SHEET	REV. C



REVISIONS				
REV	DESCRIPTION	DATE	CHK/DE	APV
A	ISSUED FOR INFORMATION	08/13/19	N.R./M.R.	M.S.
B	ISSUED FOR INFORMATION	09/13/19	N.R./M.R.	M.S.
C	ISSUED FOR APPROVAL	11/07/19	N.R./M.R.	M.S.

REFERENCE DRAWINGS

NOTES

- 1. CO2, EMISSION PORTS IN VERTICAL 31'-0" STACK



PRELIMINARY ONLY  
- NOT FOR CONST. -

SOLAR TURBINES		THIS COPYRIGHTED WORK AND THE INFORMATION HEREIN IS PROPRIETARY TO CATERPILLAR INC., SOLAR TURBINES INC., AND/OR SUBSIDIARIES OF EITHER, WITHOUT EXPRESS WRITTEN PERMISSION FROM CATERPILLAR INC. OR SOLAR TURBINES INC., ANY COPYING, DISCLOSURE, OR USE EXCEPT THAT FOR WHICH IT IS LOANED, IS PROHIBITED.	
PROJ ENG	M. SACHNIK	DATE	
DISCIPLINE ENG	M. ROUTHU	DATE	
CHECK		DATE	
DESIGN/DRAFT	D. VIDALURRI	DATE	08/08/19
SOLAR PROJECT/PROPOSAL NO.	4C161/P115-0034		
CUSTOMER IDENT. NO.			
CUSTOMER	DOMINION ENERGY	DRAWING NO.	4C161-000-1500-LAYT-310
SCALE	NONE	REV.	C
SHEET			

Plot date: Monday, January 6, 2020 11:28:37 AM



**REVISIONS**

REV	DESCRIPTION	DATE	CHK/DE	APV
A	ISSUED FOR APPROVAL	11/11/19	PK/RC	JR
B	ISSUED FOR PERMIT	04/17/20	RC/JR	MS

**REFERENCE DRAWINGS**

- 4C161-000-1700-DIAG-001 480VAC MOTOR CONTROL CENTER ONE LINE DIAGRAM
- 4C161-000-1700-BLOK-001 A.C. & D.C. BLOCK DIAGRAM
- 4C161-000-1700-BLOK-002 A.C. & D.C. BLOCK DIAGRAM

**NOTES**

- 1. (\*) ARE LOOSE SHIPPED ITEMS, PROVIDED BY SOLAR (TM).

**LEGEND**

- SD SMOKE DETECTOR
- TD THERMAL DETECTOR

**ISSUED FOR PERMIT  
- NOT FOR CONST.**

<b>SOLAR TURBINES</b>		THIS COPYRIGHTED WORK AND THE INFORMATION HEREIN IS PROPRIETARY TO CATERPILLAR INC., SOLAR TURBINES INC., AND/OR SUBSIDIARIES OF EITHER, WITHOUT EXPRESS WRITTEN PERMISSION FROM CATERPILLAR INC. OR SOLAR TURBINES INC., ANY COPYING, DISCLOSURE, OR USE EXCEPT THAT FOR WHICH IT IS LOANED, IS PROHIBITED.	
APPROVED	DATE	LOCAL EQUIPMENT ROOM	
PROJ ENG M. SACHNIK	11/11/19	ELECTRICAL EQUIPMENT LAYOUT	
DISCIPLINE ENG J. RODRIGUEZ	11/11/19	CENTAUR 50	
CHECK R. CUMBY	11/11/19	DETI BORGER STATION	
DESIGN/DRAFT P. KINDLA	11/07/19	<b>Solar Turbines</b>	
SOLAR PROJECT/PROPOSAL NO. 4C161		A Caterpillar Company	
CUSTOMER IDENT. NO.		DRAWING NO. 4C161-000-1700-LTY-001	SCALE 1/2"=1'-0"
CUSTOMER DOMINION ENERGY			REV. B SHEET 1 OF 1



EXPIRES: MAY 2020

*Allen D. Hagen*

