

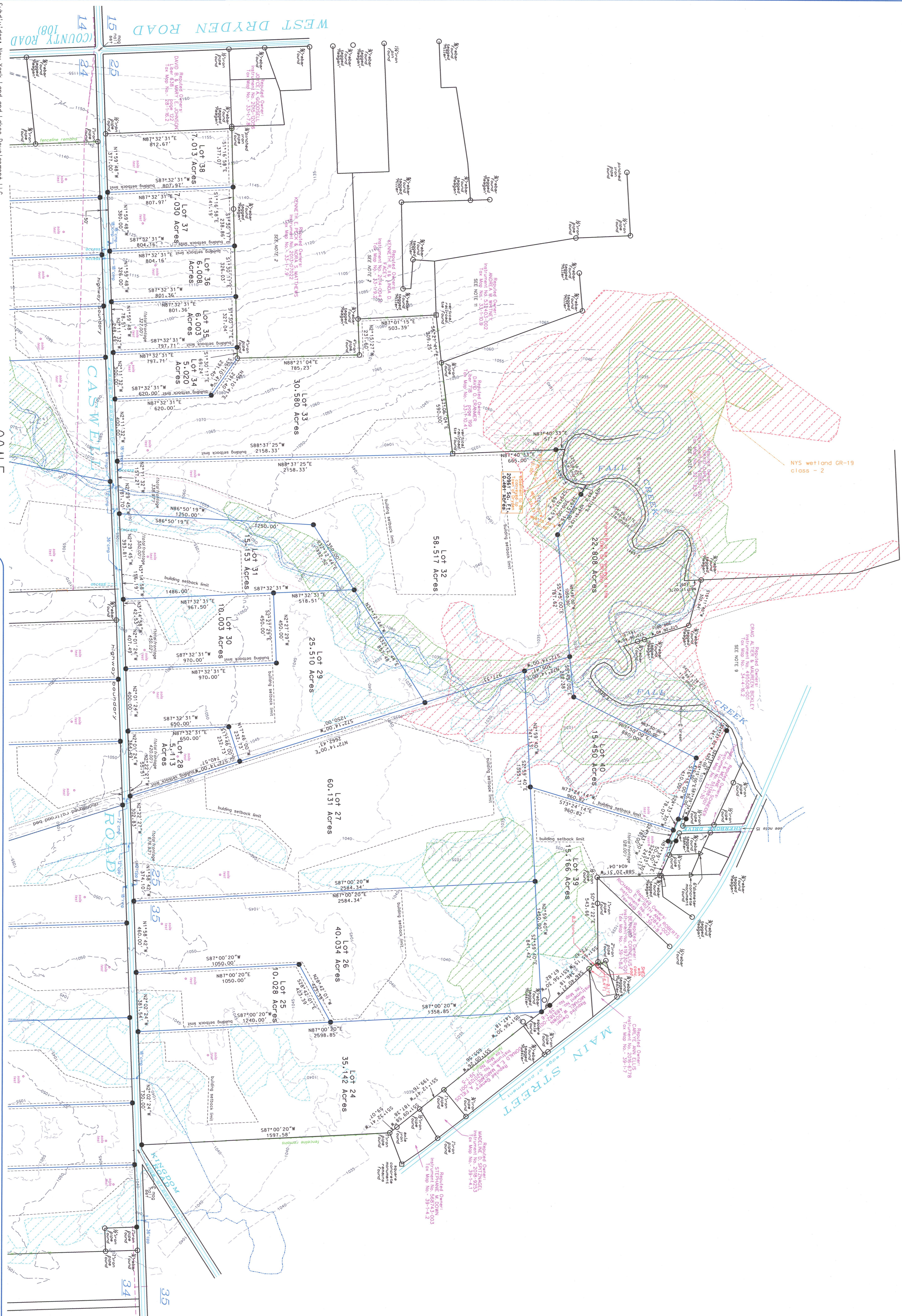


TRUE NORTH  
at 76°-35' meridian  
of west longitude

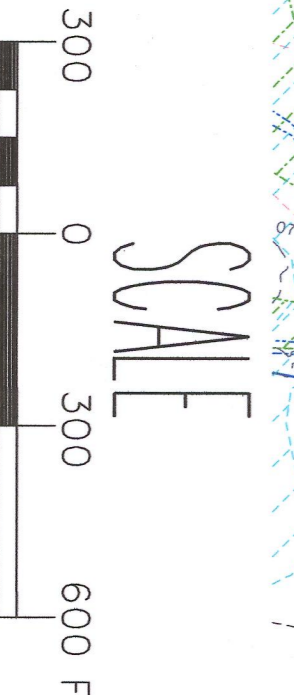
Zoning: Conservation - CV  
Area - 1 Acres  
Width - 100'  
Setbacks FRONT - 50'  
REAR - 25'

**NOTES:**

- 24 Acres Parcel Lot Number in the Military Tract in the Town of Dryden, Cayuga County, New York, is hereby divided into 35 lots as shown on this map. The total area of the parcel is approximately 24.00 acres.
- Reference map: "Survey Map of Lots of John A. Gower, Widow, Lot 25, Dryden, Cayuga County, New York, as shown on a map filed in the Tompkins County Clerk's Office on 08/10/2010, and as amended by Instrument No. 509373-001, dated 07/30/2010.
- Reference map: "Survey Map of Lots of John A. Gower, Widow, Lot 25, Dryden, Cayuga County, New York, as shown on a map filed in the Tompkins County Clerk's Office on 08/10/2010, and as amended by Instrument No. 509373-001, dated 07/30/2010.
- Reference map: "Survey Map of Lots of John A. Gower, Widow, Lot 25, Dryden, Cayuga County, New York, as shown on a map filed in the Tompkins County Clerk's Office on 08/10/2010, and as amended by Instrument No. 509373-001, dated 07/30/2010.
- Reference map: "Survey Map of Lots of John A. Gower, Widow, Lot 25, Dryden, Cayuga County, New York, as shown on a map filed in the Tompkins County Clerk's Office on 08/10/2010, and as amended by Instrument No. 509373-001, dated 07/30/2010.
- Reference map: "Survey Map of Lots of John A. Gower, Widow, Lot 25, Dryden, Cayuga County, New York, as shown on a map filed in the Tompkins County Clerk's Office on 08/10/2010, and as amended by Instrument No. 509373-001, dated 07/30/2010.
- Reference map: "Survey Map of Lots of John A. Gower, Widow, Lot 25, Dryden, Cayuga County, New York, as shown on a map filed in the Tompkins County Clerk's Office on 08/10/2010, and as amended by Instrument No. 509373-001, dated 07/30/2010.
- Reference map: "Survey Map of Lots of John A. Gower, Widow, Lot 25, Dryden, Cayuga County, New York, as shown on a map filed in the Tompkins County Clerk's Office on 08/10/2010, and as amended by Instrument No. 509373-001, dated 07/30/2010.
- Reference map: "Survey Map of Lots of John A. Gower, Widow, Lot 25, Dryden, Cayuga County, New York, as shown on a map filed in the Tompkins County Clerk's Office on 08/10/2010, and as amended by Instrument No. 509373-001, dated 07/30/2010.
- Reference map: "Survey Map of Lots of John A. Gower, Widow, Lot 25, Dryden, Cayuga County, New York, as shown on a map filed in the Tompkins County Clerk's Office on 08/10/2010, and as amended by Instrument No. 509373-001, dated 07/30/2010.



Subdivided by: New York Land and Lakes Development LLC  
297 RIVER ST Suite 3  
DRYDEN, NY 13820



**GENERAL NOTES**

MAP AND SURVEY PREPARED BY  
**PAUL B. KOERTS**  
PROFESSIONAL LAND SURVEYOR  
P.O. BOX 432, WOODWISS ROAD  
GREENE, NEW YORK 13761-0432

**CERTIFICATION OF THIS SURVEY SHALL RUN TO:**

New York Land and Lakes Development LLC  
Attention: Paul B. Koerts  
Professional Land Surveyor  
Tompkins County, New York  
Tompkins County Clerk's Office  
100 State Street, Room 201  
Dryden, New York 13820

**LEGEND**

- 3/4" Orange with black dots: 1/4" Proposed lot line
- 1/4" Orange with black dots: 1/4" Existing lot line
- 1/4" Orange with black dots: 1/4" Proposed easement
- 1/4" Orange with black dots: 1/4" Existing easement
- 1/4" Orange with black dots: 1/4" Proposed setback
- 1/4" Orange with black dots: 1/4" Existing setback
- 1/4" Orange with black dots: 1/4" Proposed boundary
- 1/4" Orange with black dots: 1/4" Existing boundary
- 1/4" Orange with black dots: 1/4" Proposed road
- 1/4" Orange with black dots: 1/4" Existing road
- 1/4" Orange with black dots: 1/4" Proposed wetland
- 1/4" Orange with black dots: 1/4" Existing wetland
- 1/4" Orange with black dots: 1/4" Proposed road right-of-way
- 1/4" Orange with black dots: 1/4" Existing road right-of-way
- 1/4" Orange with black dots: 1/4" Proposed utility easement
- 1/4" Orange with black dots: 1/4" Existing utility easement
- 1/4" Orange with black dots: 1/4" Proposed drainage easement
- 1/4" Orange with black dots: 1/4" Existing drainage easement
- 1/4" Orange with black dots: 1/4" Proposed utility easement
- 1/4" Orange with black dots: 1/4" Existing utility easement
- 1/4" Orange with black dots: 1/4" Proposed drainage easement
- 1/4" Orange with black dots: 1/4" Existing drainage easement

**SPECIAL ZONE LEGEND**

- 1/4" Orange with black dots: 1/4" Proposed lot line
- 1/4" Orange with black dots: 1/4" Existing lot line
- 1/4" Orange with black dots: 1/4" Proposed easement
- 1/4" Orange with black dots: 1/4" Existing easement
- 1/4" Orange with black dots: 1/4" Proposed setback
- 1/4" Orange with black dots: 1/4" Existing setback
- 1/4" Orange with black dots: 1/4" Proposed boundary
- 1/4" Orange with black dots: 1/4" Existing boundary
- 1/4" Orange with black dots: 1/4" Proposed road
- 1/4" Orange with black dots: 1/4" Existing road
- 1/4" Orange with black dots: 1/4" Proposed wetland
- 1/4" Orange with black dots: 1/4" Existing wetland
- 1/4" Orange with black dots: 1/4" Proposed road right-of-way
- 1/4" Orange with black dots: 1/4" Existing road right-of-way
- 1/4" Orange with black dots: 1/4" Proposed utility easement
- 1/4" Orange with black dots: 1/4" Existing utility easement
- 1/4" Orange with black dots: 1/4" Proposed drainage easement
- 1/4" Orange with black dots: 1/4" Existing drainage easement