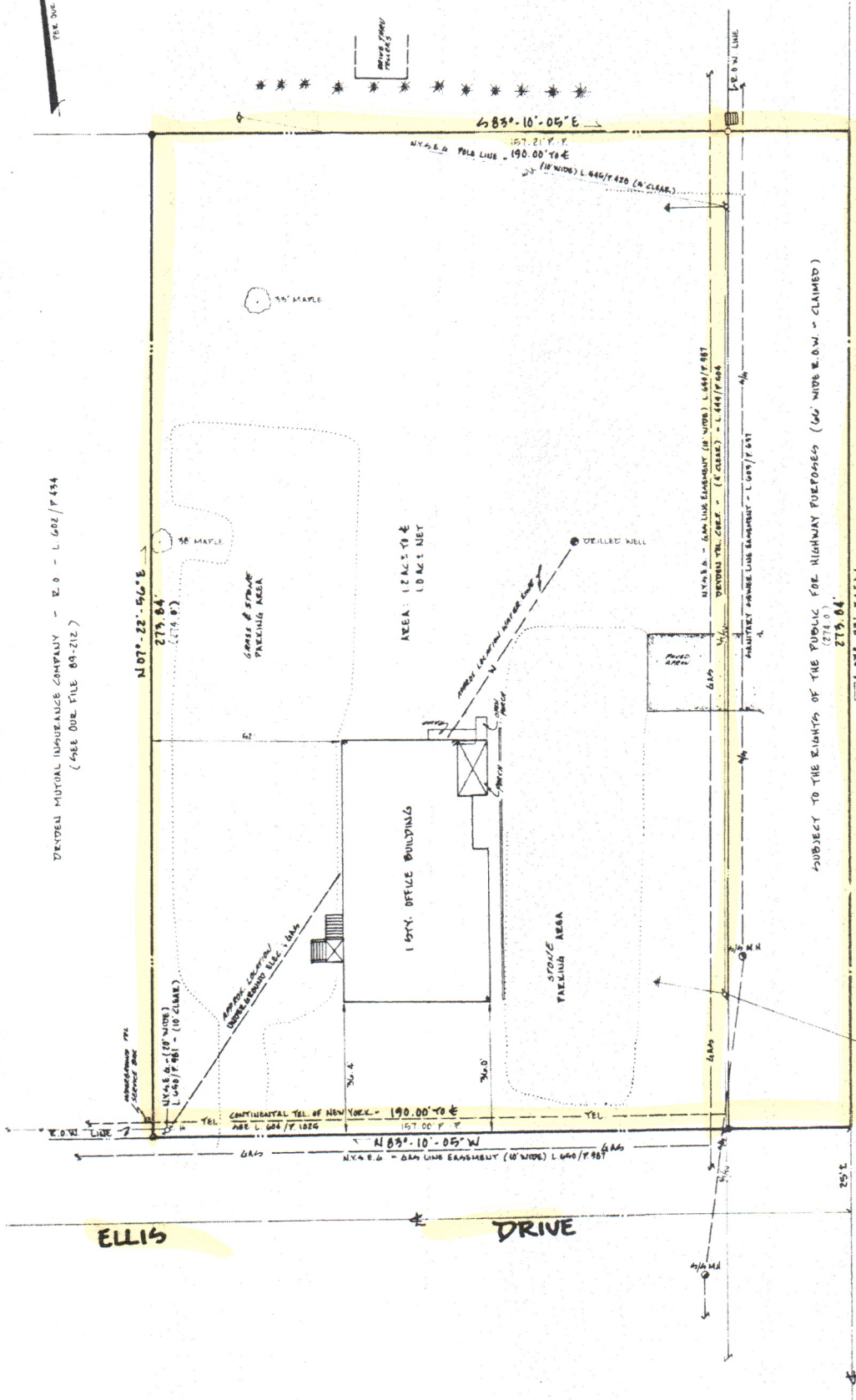


RECEIVED/FILED
TOMPKINS COUNTY CLERK
97 OCT -1 PM 2:52

TOMPKINS COUNTY TRUST COMPANY - R.O. - L 626/P 101

DEYDELL MUTUAL INSURANCE COMPANY - R.O. - L 602/P 434
(SEE OUR FILE 89-212)



SUBJECT TO THE RIGHTS OF THE PUBLIC FOR HIGHWAY PURPOSES (66' WIDE E.O.W. - CLAIMED)

NEW YORK STATE ROUTE 13

- LEGEND**
- PART IRON PIV POST
 - EXISTING IRON PIV
 - UTILITY PILE
 - MANHOLE
 - REVERSE CURVE
 - TYPICAL
 - 4" 6" SECTION PILE
 - DIVISION PILE

PATRICIA SCHLECHT

710 MILITARY LOT 30
TOWN OF DRYDEN - COUNTY OF TOMPKINS
STATE OF NEW YORK
TAX PARCEL NO 30-1-91.2
DEED - L 646/P 1114

NOTE: SEE ORIGINAL SURVEY OF THIS LOT MADE BY GEORGE C. SCHLECHT, JR. ON JAN. 1, 1989 RECORDED IN DEED L 646/P 1114

MANZAR & REAGAN, LAND SURVEYORS
150 W. 10th Street, Dryden, NY 13820
(607) 344-8883

Scale: 1" = 20'

SIGNED: *Michael J. Reagan* 9/17/97

and that this map correctly delineates an actual survey on the ground made by me or under my direct supervision, that it was prepared in accordance with the current code of practice for land title surveys adopted by the New York Association of Professional Land Surveyors; and that I found no visible encroachments either way across property lines except as shown hereon.

Drawer HH.84