

EXISTING CONDITIONS LEGEND:

MONITORING WELL	⊙
LIGHT POLE	LP ⊙
MANHOLE	⊗
SQUARE CATCH BASIN	□
BOLLARD	•
FINISH FLOOR ELEVATION	FFE ⊕
STORM SEWER LINE (SEE MN 1)	—ST—
UNDERGROUND ELECTRIC LINE (SEE MN 1)	—U/E—
UNKNOWN UTILITY LINE (SEE MN 1)	---MN 1---
GROUND CONTOUR (SEE MN 2)	---1110---
CONCRETE AREA	▒
PAVEMENT AREA	▒

MISCELLANEOUS NOTES:

MN 1 UNDERGROUND FACILITIES, STRUCTURES AND UTILITIES HAVE BEEN PLACED ON THIS DRAWING FROM FIELD LOCATIONS, WHERE VISIBLE OR FROM RECORDED DRAWINGS PROVIDED TO THE UNDERSIGNED. THEREFORE, LOCATIONS SHOULD BE CONSIDERED APPROXIMATE ONLY. THERE MAY BE OTHER FACILITIES OR UTILITIES, THE EXISTENCE OF WHICH ARE NOT KNOWN. FOR THIS REASON, UFPD SHALL BE CONTACTED A MINIMUM OF 48 HOURS PRIOR TO ANY UNDERGROUND EXCAVATION.

MN 2 ELEVATIONS SHOWN ARE BASED ON FIELD MEASUREMENTS. CONTOURS ARE MERELY INTERPOLATION AND SHOULD BE CONSIDERED AS SUCH ONLY.

NOT FOR CONSTRUCTION

No.	Revision	Date
Project Name		
ISC PETROLEUM BULK STORAGE TANK UPGRADE		
ITHACA, NEW YORK		

DELTA
ENGINEERS, ARCHITECTS, & SURVEYORS
4873 NYS Route 5
Vernon, NY 13476
Tel: 315.953.4200
Fax: 315.953.4202
Email: mail@delta-eas.com
www.delta-eas.com
CERTIFICATE OF AUTHORIZATION#: 019598

Seal	Phase	FOR PERMITTING
	Project No.	2021.700.024
	Date	2023.01.16

Drawing Title
EXISTING CONDITIONS PLAN

Drawing No.



EXISTING CONDITIONS LEGEND:

MONITORING WELL	⊙
LIGHT POLE	LP ⊙
MANHOLE	⊗
SQUARE CATCH BASIN	□
BOLLARD	•
FINISH FLOOR ELEVATION	FFE ⊕
STORM SEWER LINE (SEE MN 1)	—ST—
UNDERGROUND ELECTRIC LINE (SEE MN 1)	—UE—
UNKNOWN UTILITY LINE (SEE MN 1)	---U---
GROUND CONTOUR (SEE MN 2)	---1110---
CONCRETE AREA	▨
PAVEMENT AREA	▧

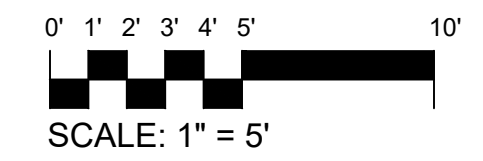
REMOVALS AND EROSION & SEDIMENT CONTROL LEGEND

ASPHALT PAVEMENT	▧
CONCRETE	▨
OTHERS	---
COMPOST ROLL SILT CONTROL	—○—
INLET PROTECTION	▩

REMOVALS AND EROSION & SEDIMENT CONTROL KEY NOTES

1	REMOVE EXISTING LIGHT POLE.
2	REMOVE EXISTING BOOTH AND SALVAGE CARD READER FOR REUSE. REMOVE GAS PUMP.
3	REMOVE EXISTING BOLLARD.
4	SAW-CUT AND REMOVE EXISTING ASPHALT PAVEMENT TO REQUIRED DEPTH.
5	REMOVE EXISTING CONCRETE PAD.
6	REMOVE EXISTING UNDERGROUND GAS TANK, VENTS AND ALL APPURTENANCES.
7	REMOVE EXISTING UNDERGROUND CONDUITS. SEE ELECTRICAL REMOVALS PLAN FOR MORE INFORMATION.
8	PROVIDE 12" COMPOST ROLL AROUND TOE OF STOCKPILE.
9	PROVIDE 12" COMPOST ROLL SILT CONTROL.
10	PROVIDE COMPOST ROLL INLET PROTECTION. SEE DETAIL 7/C-301.

1 REMOVALS AND EROSION & SEDIMENT CONTROL PLAN
 C-102 SCALE: 1" = 5'



NOT FOR CONSTRUCTION

Project Name
ISC PETROLEUM BULK STORAGE TANK UPGRADE
 ITHACA, NEW YORK

DELTA
 ENGINEERS, ARCHITECTS, & SURVEYORS
 4873 NYS Route 5
 Vernon, NY 13476
 Tel: 315.953.4200
 Fax: 315.953.4202
 Email: mail@delta-eas.com
 www.delta-eas.com
 CERTIFICATE OF AUTHORIZATION#: 019598

Seal	Phase
	FOR PERMITTING
	Project No.
	2021.700.024
	UNAUTHORIZED ALTERATION OF THIS DRAWING IS A VIOLATION OF THE NEW YORK STATE EDUCATION LAW, SECTION 7209, SUBSECTION 2.
	Date
	2023.01.16

Drawing Title
REMOVALS AND EROSION & SEDIMENT CONTROL PLAN

Drawing No.
C-102



EXISTING CONDITIONS LEGEND:

MONITORING WELL	⊗
LIGHT POLE	LP ⊙
MANHOLE	⊗
SQUARE CATCH BASIN	□
BOLLARD	•
FINISH FLOOR ELEVATION	FFE ⊕
STORM SEWER LINE (SEE MN 1)	—ST—
UNDERGROUND ELECTRIC LINE (SEE MN 1)	—UE—
UNKNOWN UTILITY LINE (SEE MN 1)	---
GROUND CONTOUR (SEE MN 2)	---1110---
CONCRETE AREA	▒
PAVEMENT AREA	▒

SITE PLAN LEGEND:

ASPHALT PAVEMENT	▒
CONCRETE PAVEMENT	▒
BOLLARD	•
UNDERGROUND ELECTRIC	—UE—
SPOT GRADE	⊕ [TS 1109.9]
INDEX GROUND CONTOUR	---[1110]---
CONSTRUCTION FENCE	—x—
LIGHT POLE	⊕

KEY NOTES

1	PROVIDE HIGH VISIBILITY SAFETY CONSTRUCTION FENCE. SEE DETAIL 8/C-301.
2	PROVIDE HEAVY DUTY ASPHALT PAVEMENT. SEE DETAIL 1/C-301.
3	PROVIDE CONCRETE SLAB. SEE DETAIL 2/C-301.
4	PROVIDE PIPE BOLLARD, TYP. SEE DETAIL 3/C-301.
5	PROVIDE FUEL DISPENSER WITH PEDESTAL.
6	REINSTALL PREVIOUSLY SALVAGED CARD READER.
7	PROVIDE 6,000 GAL ABOVE GROUND VAULT TANK. SEE DETAIL 4/C-301.
8	PROVIDE ELECTRICAL CONDUIT AND WIRING. SEE DETAIL 6/C-301 AND ELECTRICAL PLAN FOR MORE INFORMATION.
9	PROVIDE DOUBLE-LED LIGHT FIXTURE ON 20' SQUARE ALUMINUM POLE. SEE ELECTRICAL DRAWING E-501 FOR DETAILS.

Square Catch Basin
 Rim Elevation = 1108.77
 (8") SE Invert In = 1105.33
 (18") S Invert In = 1103.79
 (12") SW Invert In = 1103.69
 (8") NW Invert In = 1103.59
 (24") NE Invert Out = 1103.64

NOT FOR CONSTRUCTION

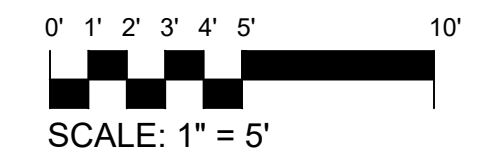
No. Revision Date
 Project Name
ISC PETROLEUM BULK STORAGE TANK UPGRADE
 ITHACA, NEW YORK

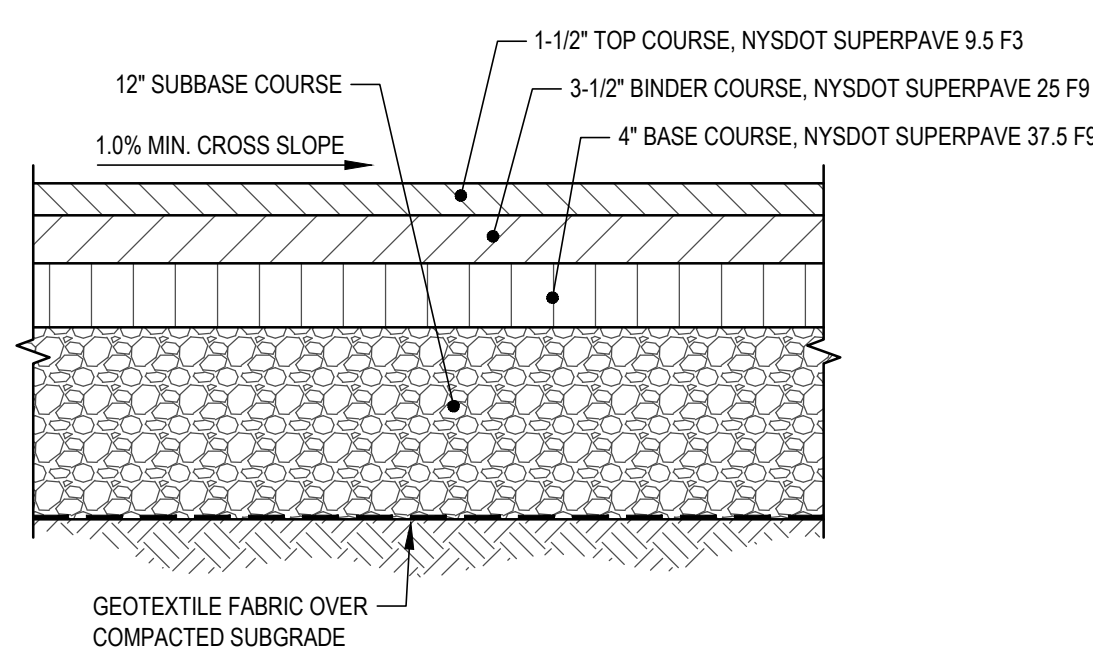
DELTA
 ENGINEERS, ARCHITECTS, & SURVEYORS
 4873 NYS Route 5
 Vernon, NY 13476
 Tel: 315.953.4200
 Fax: 315.953.4202
 Email: mail@delta-eas.com
 www.delta-eas.com
 CERTIFICATE OF AUTHORIZATION#: 019598

Seal	Phase FOR PERMITTING
	Project No. 2021.700.024
	UNAUTHORIZED ALTERATION OF THIS DRAWING IS A VIOLATION OF THE NEW YORK STATE EDUCATION LAW, SECTION 7201, SUBSECTION 2.
	Date 2023.01.16

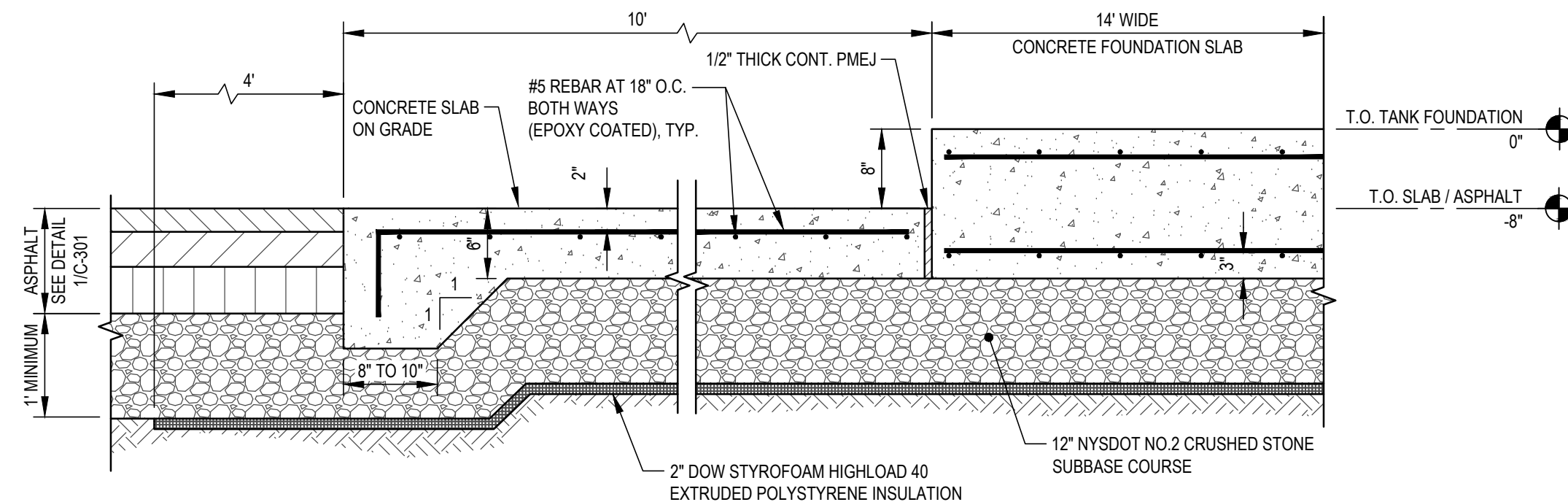
Drawing Title
SITE PLAN

Drawing No.



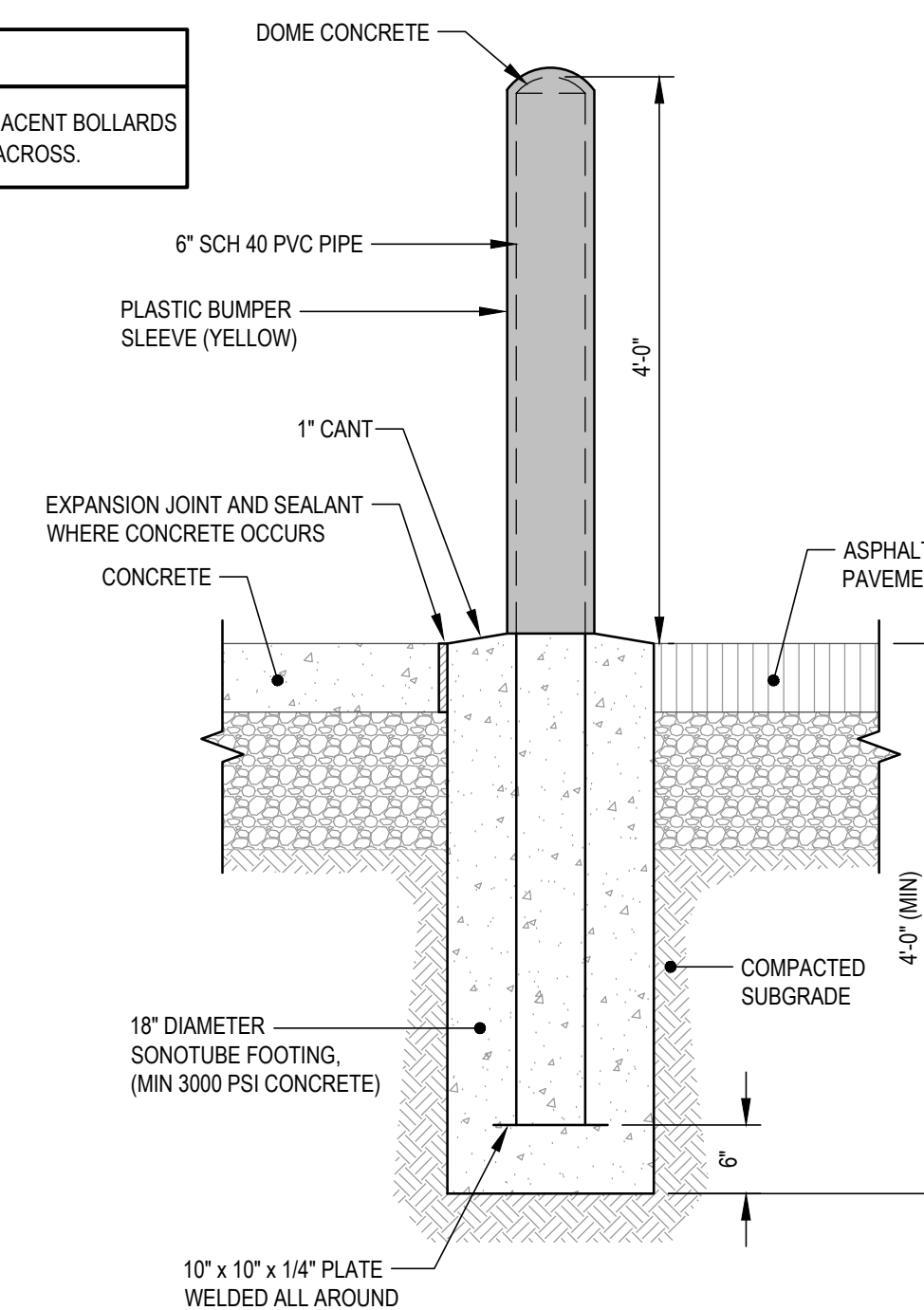


1 HEAVY DUTY ASPHALT PAVEMENT DETAIL
SCALE: NONE

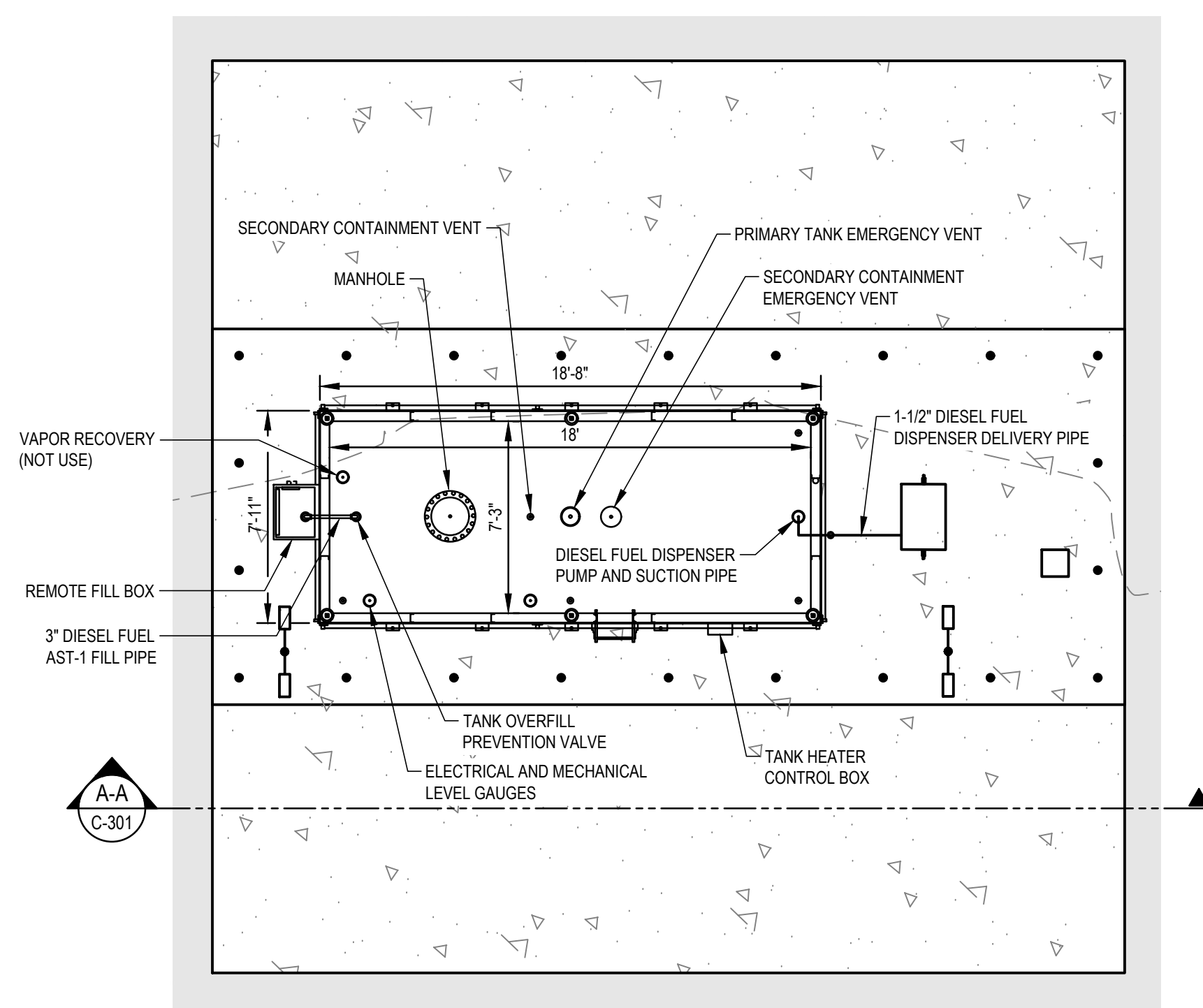


2 CONCRETE SLAB FOR ABOVE GROUND VAULT TANK DETAIL
SCALE: NONE

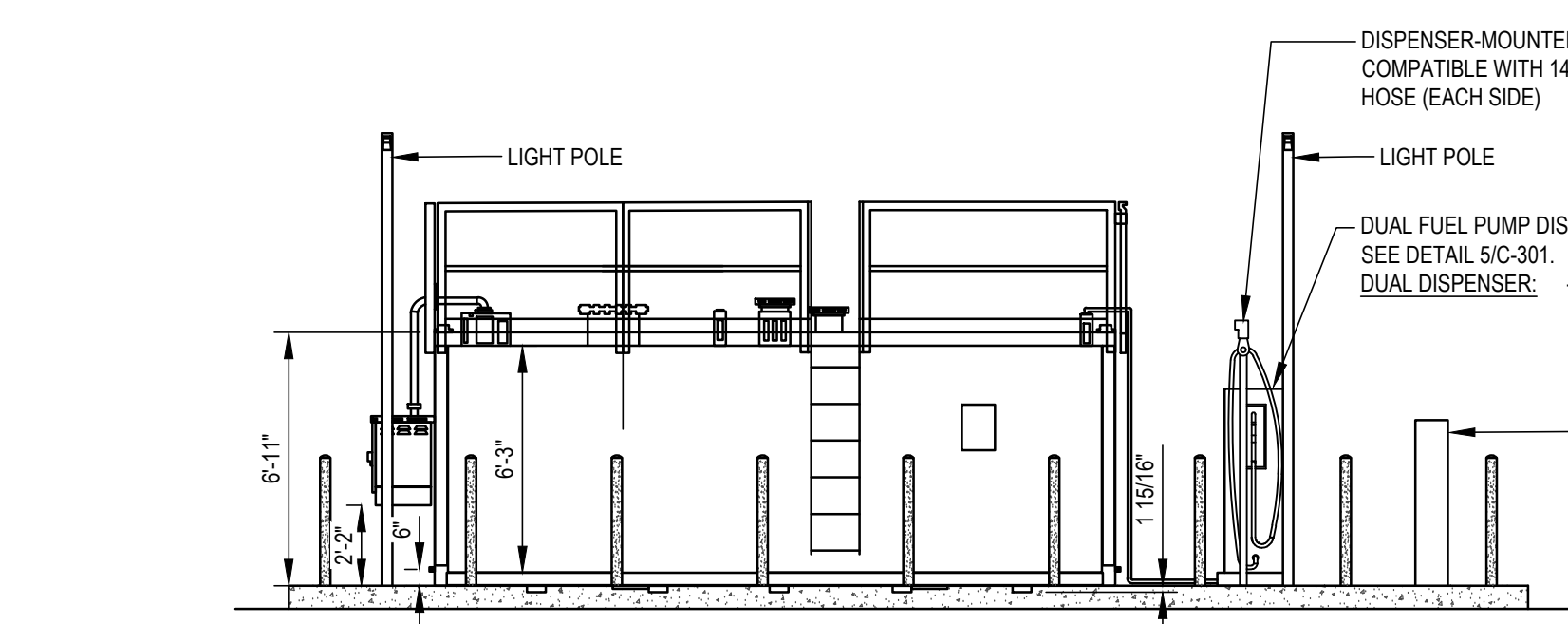
GENERAL NOTES:
1. THE TOPS OF ADJACENT BOLLARDS SHALL BE LEVEL ACROSS.



3 PIPE BOLLARD DETAIL
SCALE: NONE



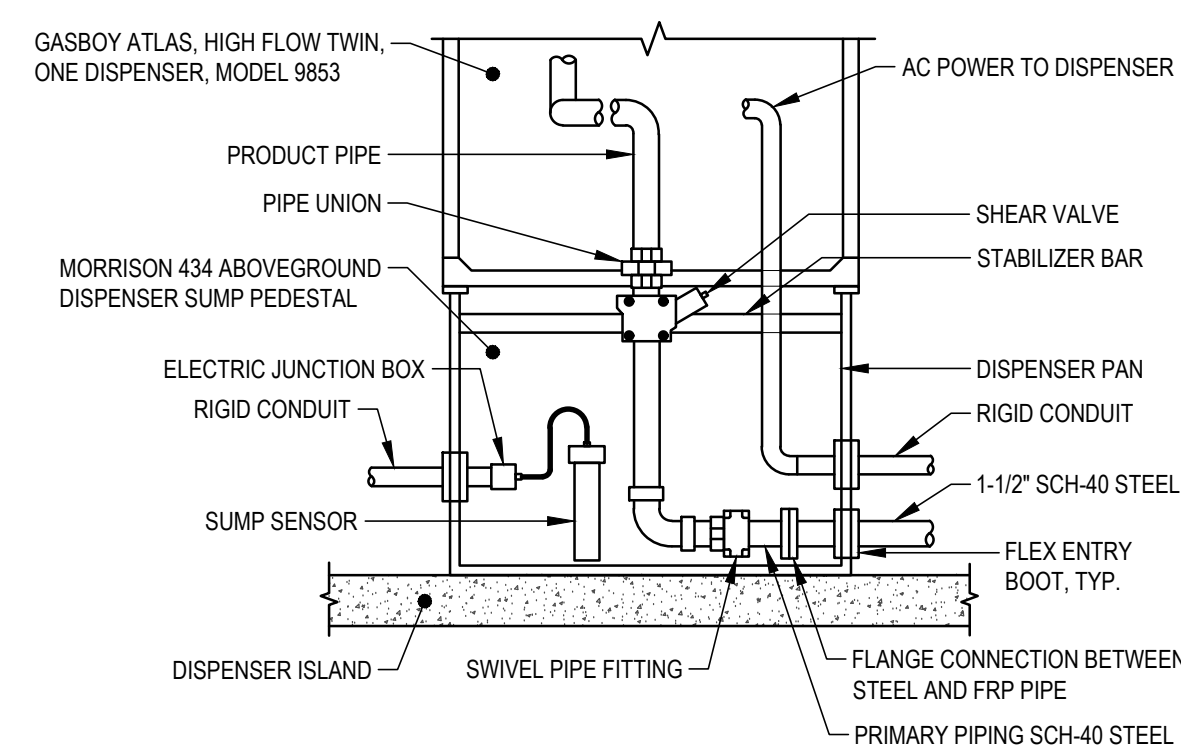
PLAN VIEW



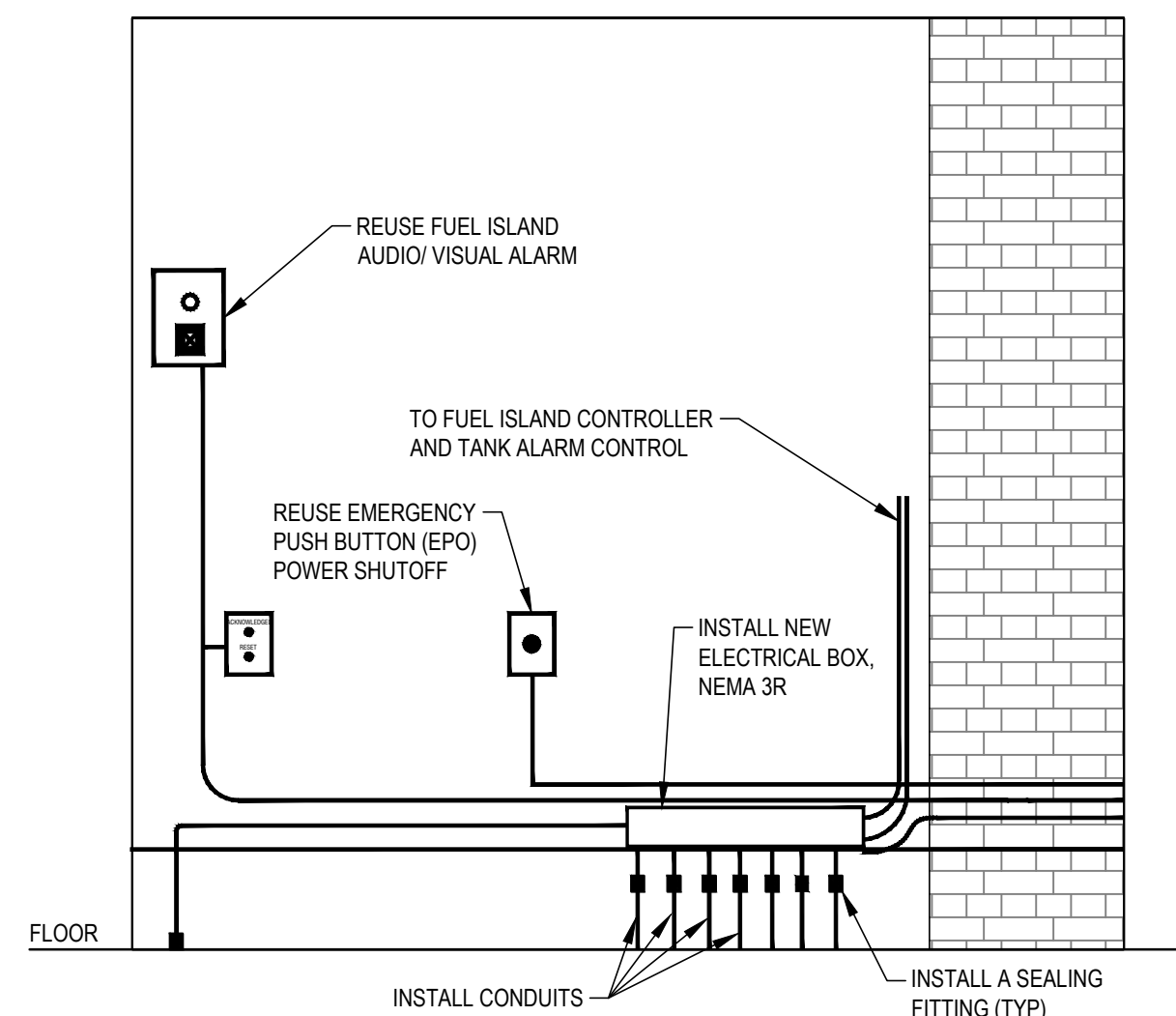
CROSS SECTION VIEW A-A

NOTES:
DISPENSER TO CONTAIN A FILTER AND 10:1 PULSER COMPATIBLE WITH CARD READER AND AVANGRID PETROLEUM MANAGEMENT SYSTEM

4 6,000 GAL ABOVE GROUND VAULT TANK DETAIL
SCALE: NONE

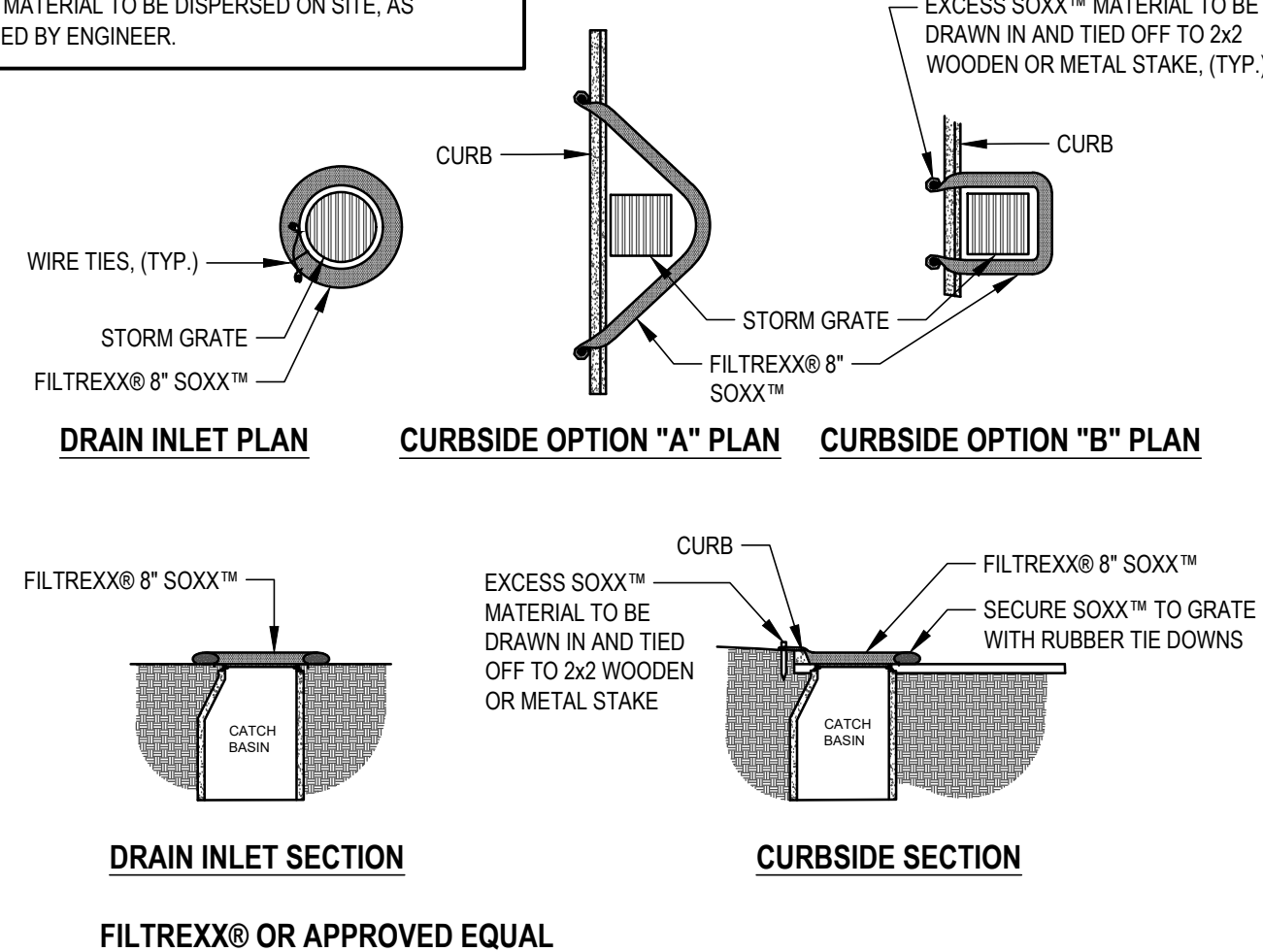


5 FUEL DISPENSER PEDESTAL
SCALE: NONE

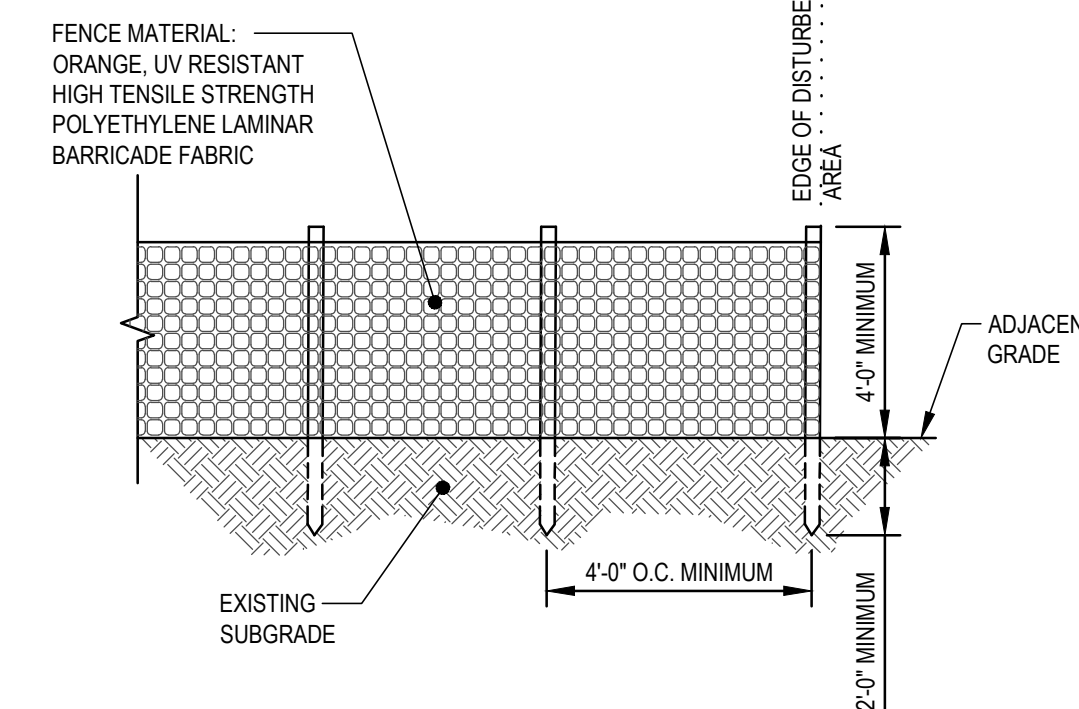


6 FUEL STATION ELECTRICAL SERVICES-PROPOSED ELEVATION DETAIL
SCALE: NONE

NOTES:
1. ALL MATERIAL TO MEET FILTREXX® SPECIFICATIONS.
2. FILTER MEDIA™ FILL TO MEET APPLICATION REQUIREMENTS.
3. COMPOST MATERIAL TO BE DISPERSED ON SITE, AS DETERMINED BY ENGINEER.



7 FILTER SOCK INLET PROTECTION DETAIL
SCALE: NONE



NOTES:
1. INSTALL ORANGE SNOW FENCING AT EDGE OF DISTURBED AREA, AS SHOWN ON PLANS, PRIOR TO COMMENCEMENT OF CONSTRUCTION.

8 CONSTRUCTION FENCE DETAIL
SCALE: NONE

NOT FOR CONSTRUCTION

No. Revision Date
Project Name
ISC PETROLEUM BULK STORAGE TANK UPGRADE
ITHACA, NEW YORK

DELTA
ENGINEERS, ARCHITECTS, & SURVEYORS
4873 NYS Route 5
Vernon, NY 13476
Tel: 315.953.4200
Fax: 315.953.4202
Email: mail@delta-eas.com
www.delta-eas.com
CERTIFICATE OF AUTHORIZATION#: 019598

Seal	Phase FOR PERMITTING
	Project No. 2021.700.024
	UNAUTHORIZED ALTERATION OF THIS DRAWING IS A VIOLATION OF THE NEW YORK STATE EDUCATION LAW, SECTION 7201, SUBSECTION 2.
	Date 2023.01.16

Drawing Title
DETAILS
Drawing No.

C-301