

**Minutes of the Dryden Rail Trail Meeting  
March 18, 2024 at Town Hall Caldwell Conference Room**

**Attendees:** Task Force Members: Susan Ashdown; Bob Beck; Todd Bittner; Tony Bretscher; Alice Walsh Green; Judy Pierpont; Chris Tessaglia-Hymes: Excused, Rosalie Borzik; Absent: Steve Winans. Town Board Liaison: Dan Lamb  
Guests: Ben Anderson, Nora Anderson, Shaun Cobb; Diane Tessaglia-Hymes, Jacob Yatsko.

**Call to order** at 7:05 p.m. by Bob Beck

**Additions to the agenda:** none

**Approval of February minutes** unanimous with changes from Susan:

DRT id on Ithacatrails.org and we will be working on getting info to TV stations

Susan's May 4 show proceeds are being donated the DRT.

**Route 13 bridge / TAP grant update** – Todd, Alice, Bob

Todd explained that he will approach Fish and Wildlife to do another inventory of trees that may support bats

**OPRHP EPF:** Response to Albany's request for documentation – Bob, Todd, Alice

Bob reviewed correspondence with State Parks about their new grant requirements, and the maps and data that Dillon Shults and he prepared and which Amanda Anderson submitted last week.

Todd suggested including references to which crossing treatments are user-activated when NYS Parks asks for next iteration of data keyed to pictures of trail intersections within the grant.

**Tompkins County Parks & Trails grants:** 2023 pending trail work and 2024 opportunity – Bob, Todd

Todd suggested: Amend the current year's grant to something we can do that doesn't rely on Bellisario fill. Some of the monkey run work doesn't meet ADA compliance. Name a project like the FH Fox bridge resurfacing and then ask for the next grant to do the Bellisario project. This needs to go back to County Planning.

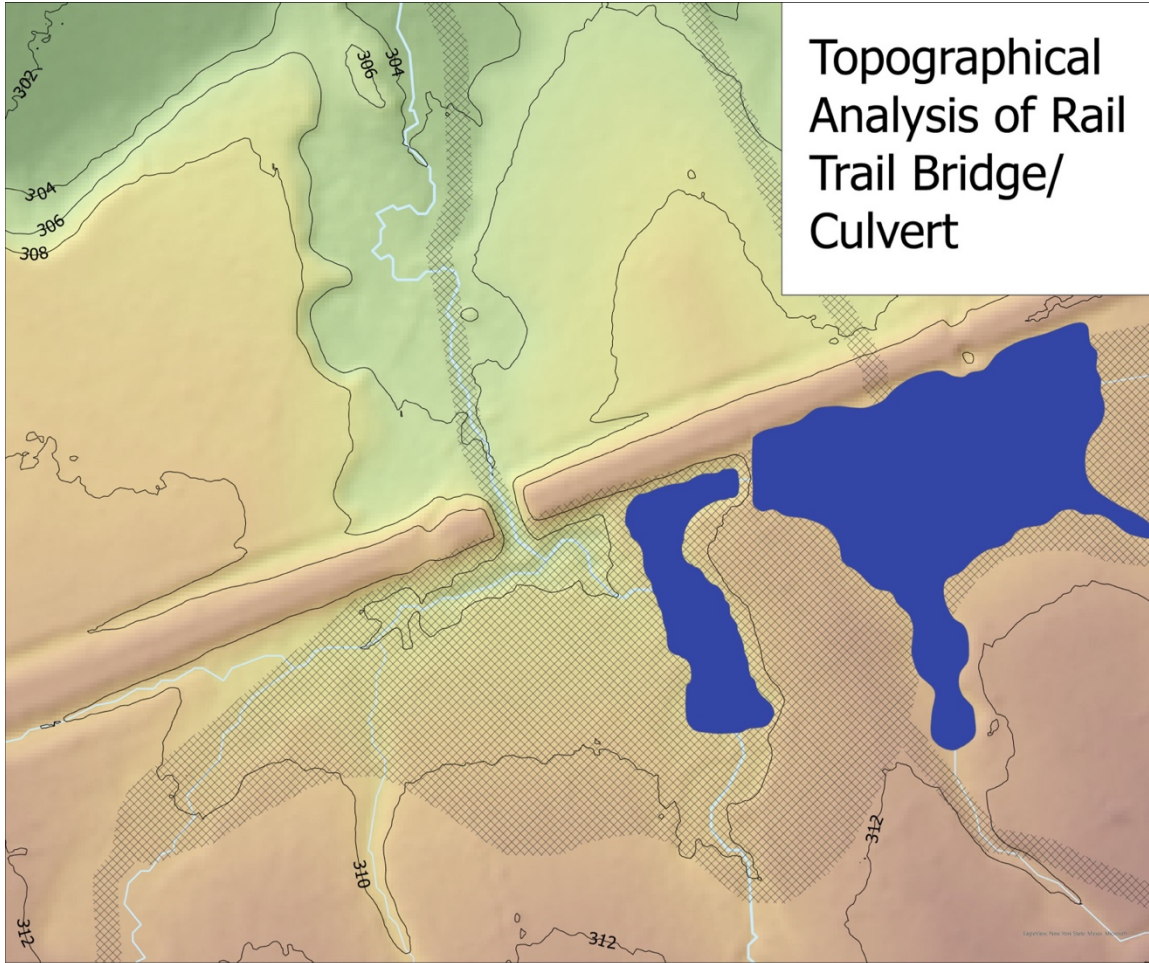
**NYSEG washout: analysis and repair plan** – Ben Anderson, Dryden High grad and engineering student at Clarkson

Following his site visits to the railbed washout (a former timber-trestle bridge) east of Pinckney Road, Ben prepared an analysis of the situation and a consideration of potential repair possibilities. His presentation generated active discussion.

The link to Ben's excellent presentation is here:

<https://docs.google.com/presentation/d/1LZcxPDR20k0DJ9YMNXg9VM9Grpxo9y5Q/edit?usp=sharing&ouid=100354943665921178307&rtpof=true&sd=true>

and his Topographic Analysis and Watershed Analysis maps are below.

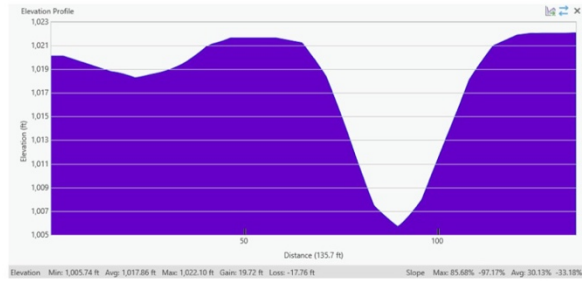


- Legend**
- Parcel Line
  - Pond
  - Wetlands
  - Streams
  - StrahlerID
  - 1
  - 2
  - 3
  - 4
  - AOI\_DEM Value
  - 314.975
  - 301.625

Characterizing the Gap:  
 Slope: ~1:1.5  
 Base of Rail Bed: ~30 ft.  
 Width of Trail: ~ 10-12 ft.  
 Height of Trail: ~ 15 ft.  
 Length of Gap: ~50-55 ft.  
 Width of Stream: ~10-12 ft.  
 Survey will be needed for accurate measurements

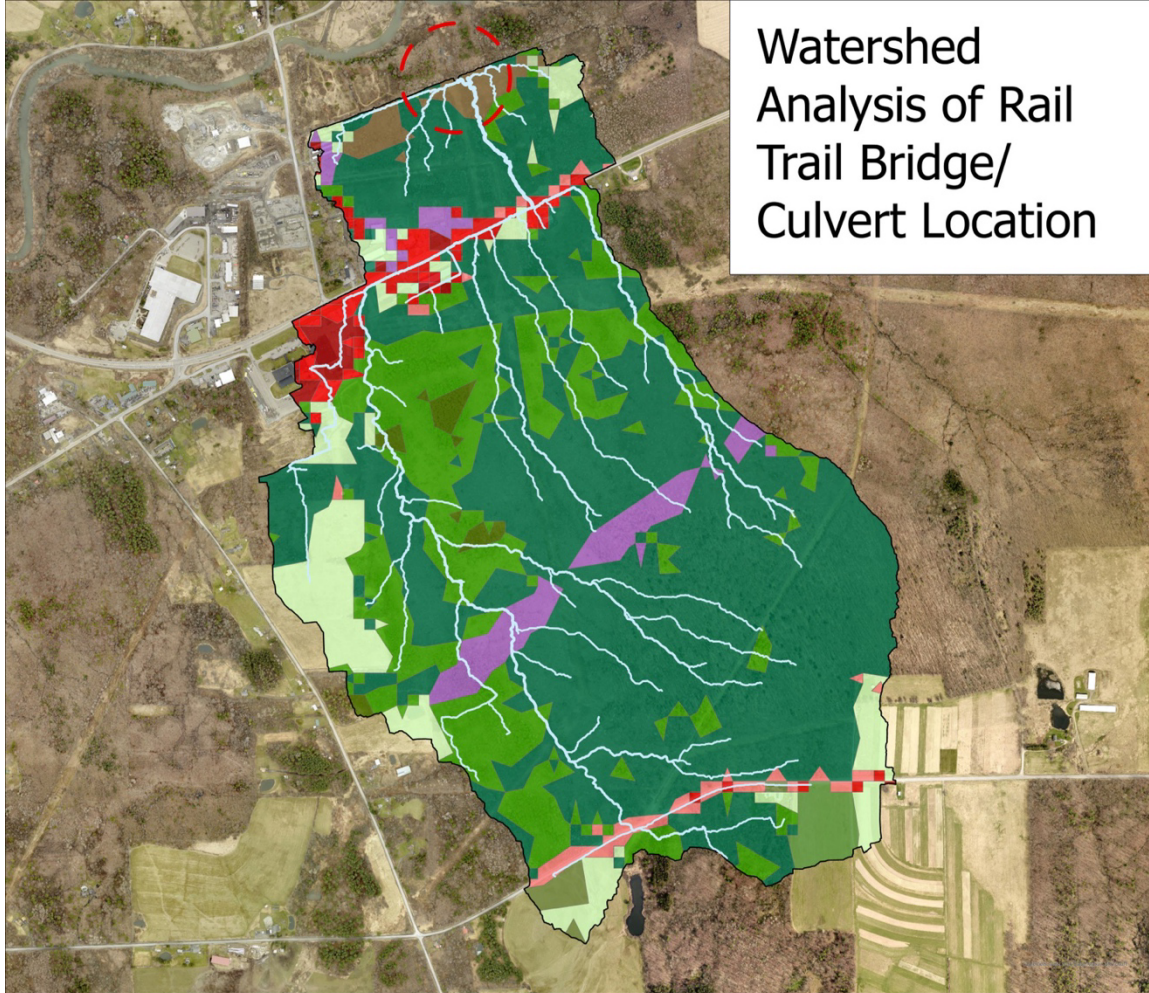
DEM (1-Meter Resolution) Source:  
 NYS GIS Clearinghouse  
 Parcel Data: Tompkins County GIS  
 Data Portal  
 NYS Wetlands Data: National  
 Wetlands Inventory (NWI)

Map Prepared by Benjamin M.  
 Anderson



NTS

# Watershed Analysis of Rail Trail Bridge/ Culvert Location



0 0.3 0.6 1.2 Miles

Curve Number ~ 65.7  
 Potential Maximum Retention ~ 5.22  
 Initial Abstractions ~ 1.04  
 100 Year Event: 5.5 in./24-hour  
 Depth of Direct Runoff for 100 Year Event ~ 2.1 in.  
 Total Area of Watershed: ~645 acres

- Legend**
- Landcover
  - NLCD\_Land
  - Cultivated Crops
  - Deciduous Forest
  - Developed, High Intensity
  - Developed, Low Intensity
  - Developed, Medium Intensity
  - Developed, Open Space
  - Emergent Wetlands
  - Evergreen Forest
  - Hay/Pasture
  - Herbaceous Forest
  - Mixed Forest
  - Shrub/Scrub
  - Woody Wetlands
  - <all other values>

DEM (1-Meter Resolution) Source:  
 NYS GIS Clearinghouse  
 SSURGO Hydrological Groups:  
 ArcGIS Living Atlas  
 Landcover Data: NLCD  
 100 Year Event Source: TR-55  
 (Fig. B-8)

Map Prepared by Benjamin M. Anderson

NLCD LandUse Code	Description	Curve Number			
		A	B	C	D
11	Open water	98	98	98	98
21	Developed, Open Space	72	82	87	89
22	Developed, Low Intensity	77	85	90	92
23	Developed, Medium Intensity	81	88	91	93
24	Developed, High Intensity	98	98	98	98
31	Barren Land	77	86	91	94
42	Evergreen Forest	39.1	48	57	63
43	Mixed Forest	39.1	48	57	63
52	Shrub/Scrub	63	77	85	88
71	Grassland/Herbaceous	68.9	71	81	89
81	Pasture/Hay	68.9	71	81	89
90	Woody Wetlands	87.4	89	90.4	90.7
91	Emergent Herbaceous Wetlands	98	98	98	98

Area of Interest located at 42.475906 N, -76.399938 W

Next meeting Scheduled for 7 pm Monday April 15 at Town Hall

Adjournment at 9:07 pm

Respectfully submitted by Alice Walsh Green

Chat content:

Chris provided a useful reference for historical aerials,

<https://digital.library.cornell.edu/collections/aerialny>

and two aerial photos containing the NYSEG parcel (below):



Title: Tompkins County, New York  
Collection: [New York State Aerial Photographs](#)  
Date: [1980](#)

**About the collection**

[Digital collection website](#) →



Title: Tompkins County, New York  
Collection: [New York State Aerial Photographs](#)  
Date: [1991](#)

**About the collection**

[Digital collection website](#) →

The NYSEG washout apparently occurred between 1980 and 1991.